



TRI-PROGRESS
ELECTRUMENT CO., LTD

COMPANY PROFILE

TRI-PROGRESS ELECTRUMENT CO.,LTD

CONTRACTOR FOR ELECTRICAL SYSTEM
INSTALLATION AND INSTRUMENT
INSTALLATION

CONTACT

TEL : 02-7033390

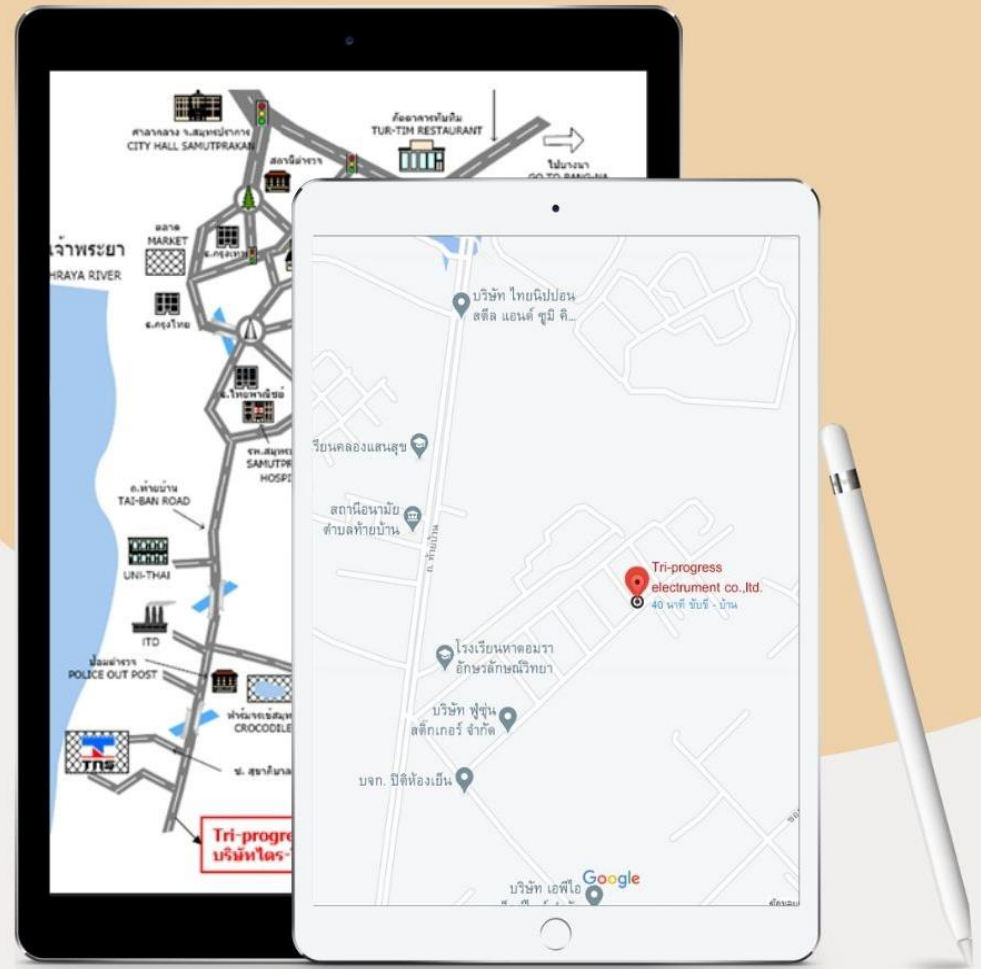
FAX : 02-7033390

E-MAIL : TRI-
PROGRESS@HOTMAIL.COM



บริษัท ไตร-โปรเกรส อิเลคทรูเมนต์ จำกัด
439/181-182 หมู่ 4 ต.ท้ายบ้าน
ต.ท้ายบ้าน อ.เมือง จ.สมุทรปราการ 10280

Tri-progress electrumment Co.,Ltd.
439/181-182 Moo. 4 Taiban Rd.
T. Taiban, A. Muang,
Samutparkarn 10280



ESEABLISHED ON 27 MARCH 1997

*439/181-182 Moo 4, Taiban, Amphur
Muang, Samutprakarn 10280*

Tel : 02-7033390

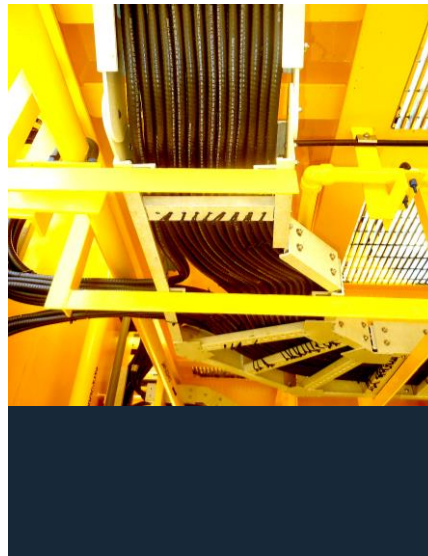
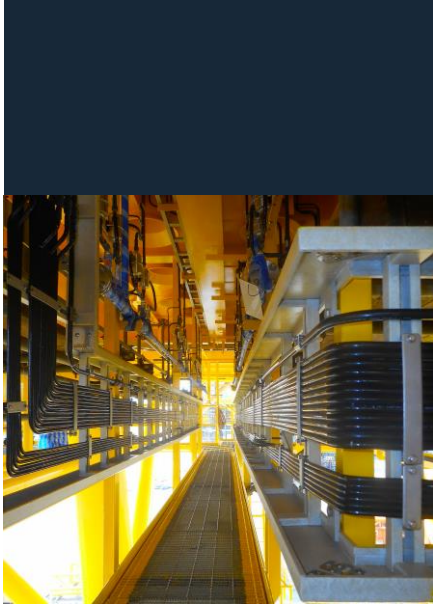
Fax : 02-7033391

E-mail : tri-progress@hotmail.com





TRI-PROGRESS ELECTRUMENT



BACKGROUND

Tri-progress electrumment Co.,Ltd. was established in February 1996 by professional in order to provide all service and installation both electrical and instrument system for any industry and office building in Thailand. The service include installation at work site. Our expertise is almost on electrical system and instrument work.

Tri-progress electrumment Co.,Ltd. Has the development team consisting both electrical and instrument work many years. All well know industries and companies in Thailand. For example CUEL CO.,LTD. Thai Nippon steel engineering and construction corp,ltd., Adisorn Co.,Ltd. Sp Co.,Ltd. Clough-Unithai Co.,Ltd. The have already been used our service for installation of both electrical and instrument system. All they feel satisfied with our service.



OBJECTIVE

Tri-progress electrumment Co.,Ltd.

Has objective as following

- 01** Provide installation of both electrical and instrument work. All of these will follow to standard for safety purpose.
- 02** Provide reliable fabrication work and necessary equipment in order to meet customer requirement.
- 03** Development in order to provide service to customer's requirement.

TRI-PROGRESS

Based on the knowledge won all wellhead platform work, process platform work and the high qualification of its members. Our team work has developed a company established in GULF OF THAILAND works.

Tri-progress provides professional, skilled workers to companies in evolved in the maintenance and/or construction of offshore structured, Petrochemical plants, Power Plants and Major infrastructure project.

Our activities are mainly centred on site for electrical and instrumentation parts of various industrial projects on the following concerns:

- Electrical and instrumentation installation and construction erection
- Electrical and instrumentation precommissioning and commissioning erection
- Start up and Energization erection
- Supervision and coordinating - Maintenance



OUR METHODS



For each one your proposal we will make with you a deep analysis either for construction and commissioning using our references and our experience That will conduct us to suggest you our point of view on the following topics:

- Put forward and justify technical adapted to the project.
- Organize these technical and the necessary resources in order to match key dates.
- Foresee problem and obtain the previous result.

Nevertheless at the end we will proceed accordingly to fulfil your requirement without to forget the cost control and the quality.



FLEXIBILITY AND EFFICIENCY

The total mobility enen to work abroad of our collaborators jointly with the high qualification and the experience of each groups can be combined to provide an optimum efficiency adapted to the specificity of each projects

Moreover ,to ensure the full success of your project, our privileged connection with Thai companies give us the possibility to have the immediate and appropriate outside support or expatriate specialist in accordance with your requirement.

THE LAST EXPERIENCE

With the advantage to have a Thai national management board. We work in the world wide experience and the know ledge of the local market.

Our company have worked 19 years for one of the subcontractor industrial group,in various profects all around the gulf of Thailand work such as hydraulic, wellhead platform power plant switch yards. Sub station, process plants, steel mill plants, refineries, buildings and various industries, before to run his own company in Thailand since 1997,give us more facilitees to have access for most of the largest foreign companies.

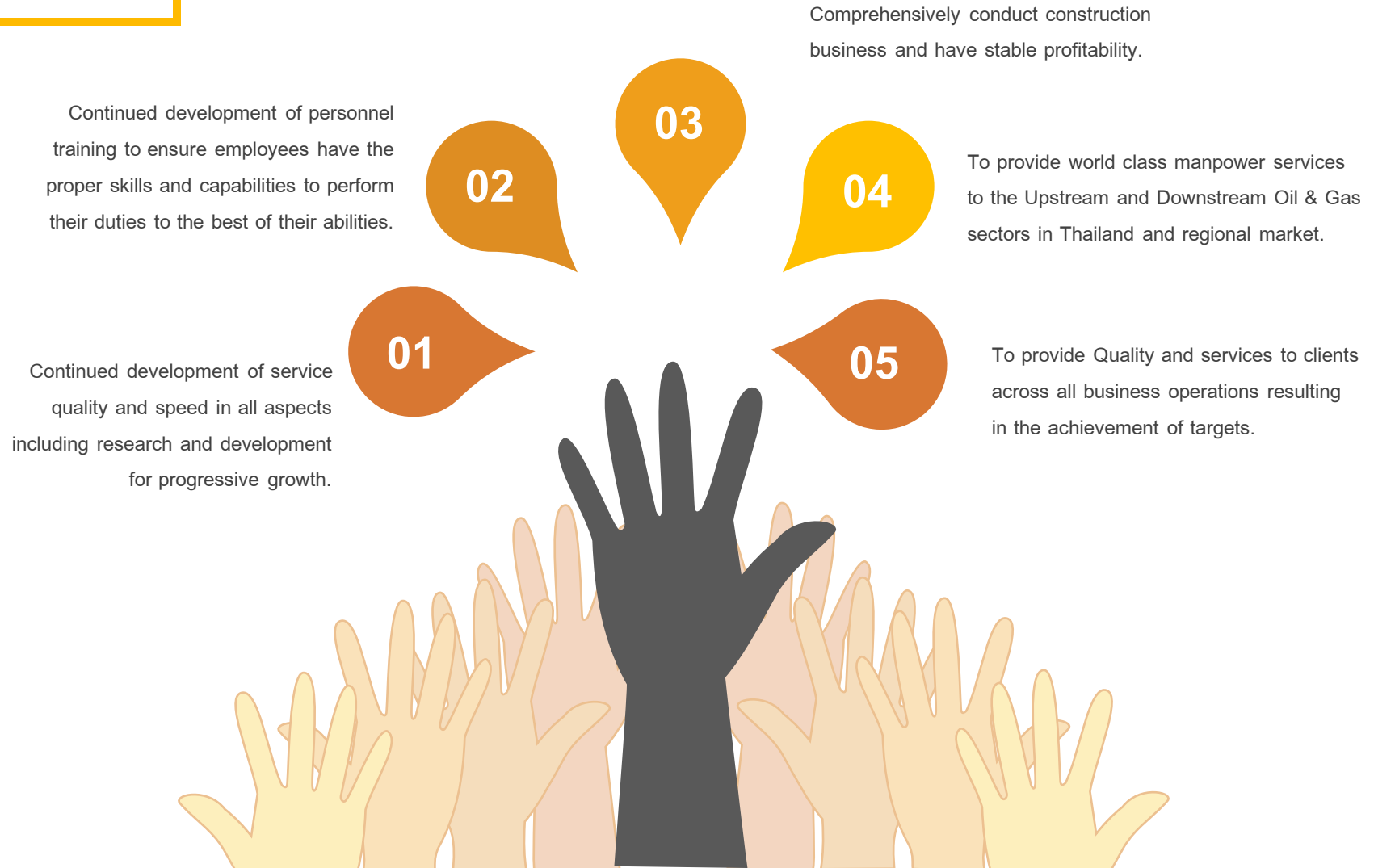




QUALITY ASSURANCE

To be the preferred provider of integrated electrical & instrument services to the Oil & Gas, Petrochemical and offshore Industry with continually improve the efficiency and effectiveness.

QUALITY CONTROL PLAN



HES PHILOSOPHY

SAFETY HEALTH POLICY TO COMPLY
WITH SYSTEM REQUIREMENT OF

Occupational, Health
Management System,

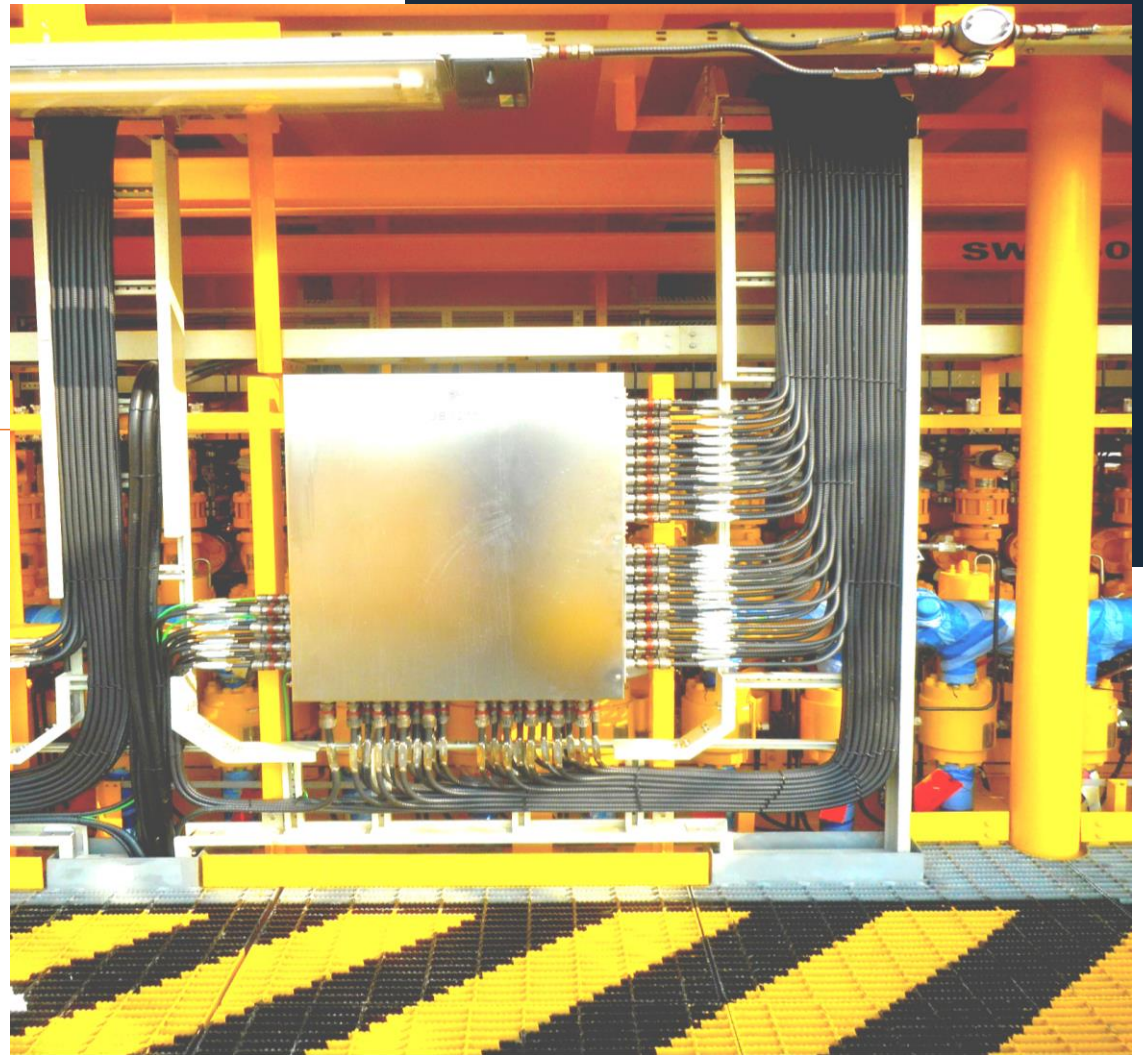
Relevant Laws,

Customer Requirements,

Acknowledge all personnel working for or on
behalf of company with the intent that they are
aware of their individual HSE responsibility,
obligations and authorized to STOP WORK

INSTALLATION WORKMANSHIP

*Tri-progress electrumment Co.,Ltd.
Is being developed in order to meet
company mission. Then we are able
provide better service to our costomer.*





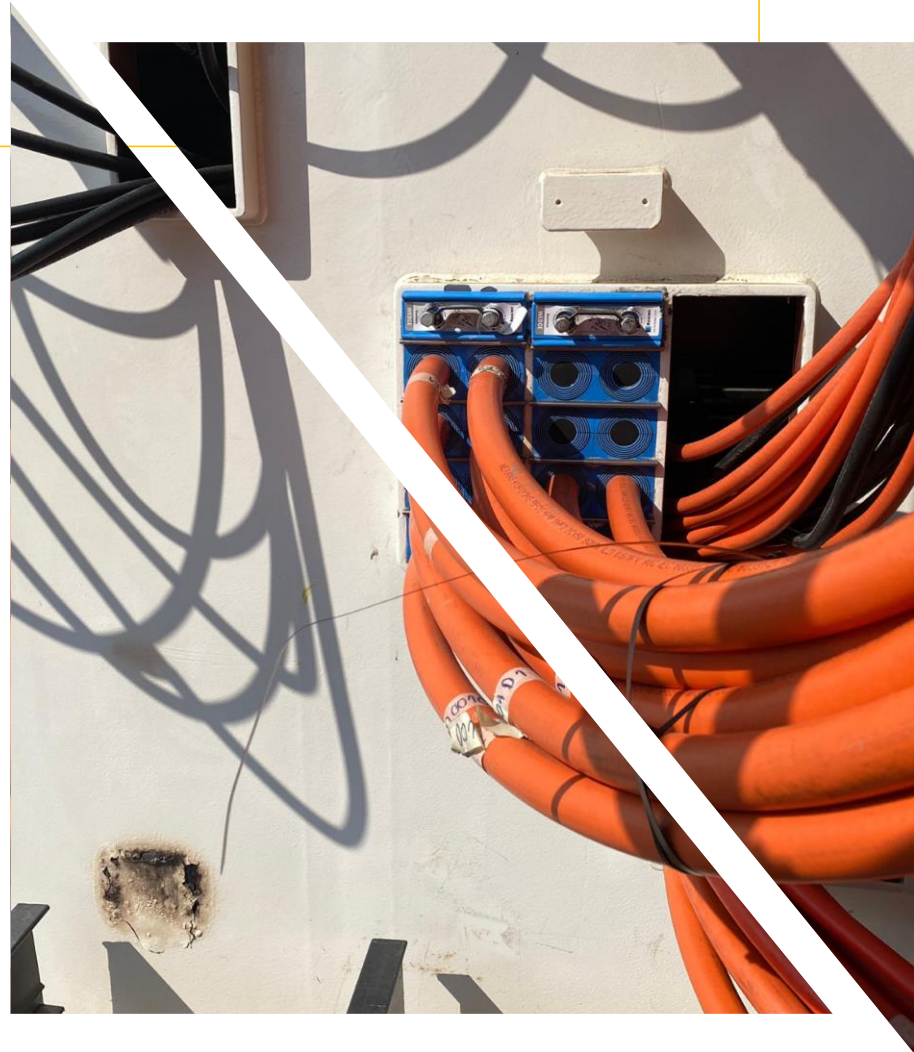
ELECTRICAL

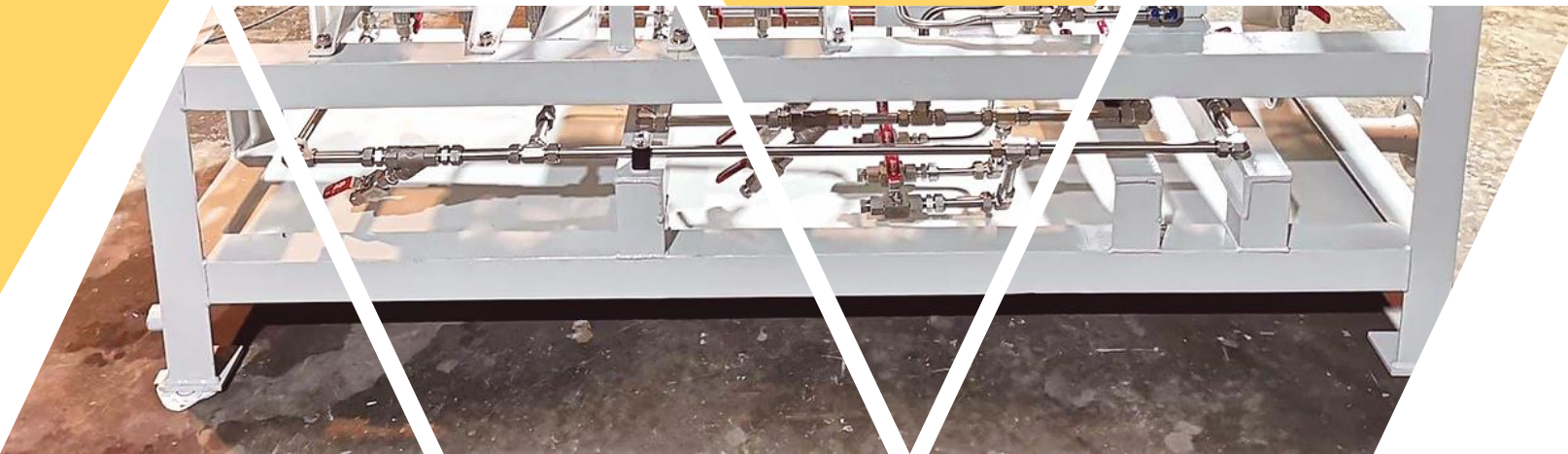
Lighting installation, wiring installation, cable installation, electrical equipment Junction box installation, PLC installation, conduit installation, cable ladder installation, power supply system, precommissioning etc. Onshore and offshore electrical installation in Thailand and Myanmar



INSTRUMENT

instrument installation such as Tubing installation, tube tray installation, level glasses, pressure switches a both pneumatic and electric, pressure indicators (aschoft,bourdon etc),pressure transmitter, pressure diff indicator, pressure recorder, controller valves, pressur safety valves, flow switches,flow transmitters, temperature indicators(aschoft), temperature transmitters, temperature recorder, etc tube installation,tubing hydro-testing, control valves, level switches (magnetrol),level transmitter precommisioning. Onshore and offshore instrument installation in Thailand and Myanmar.

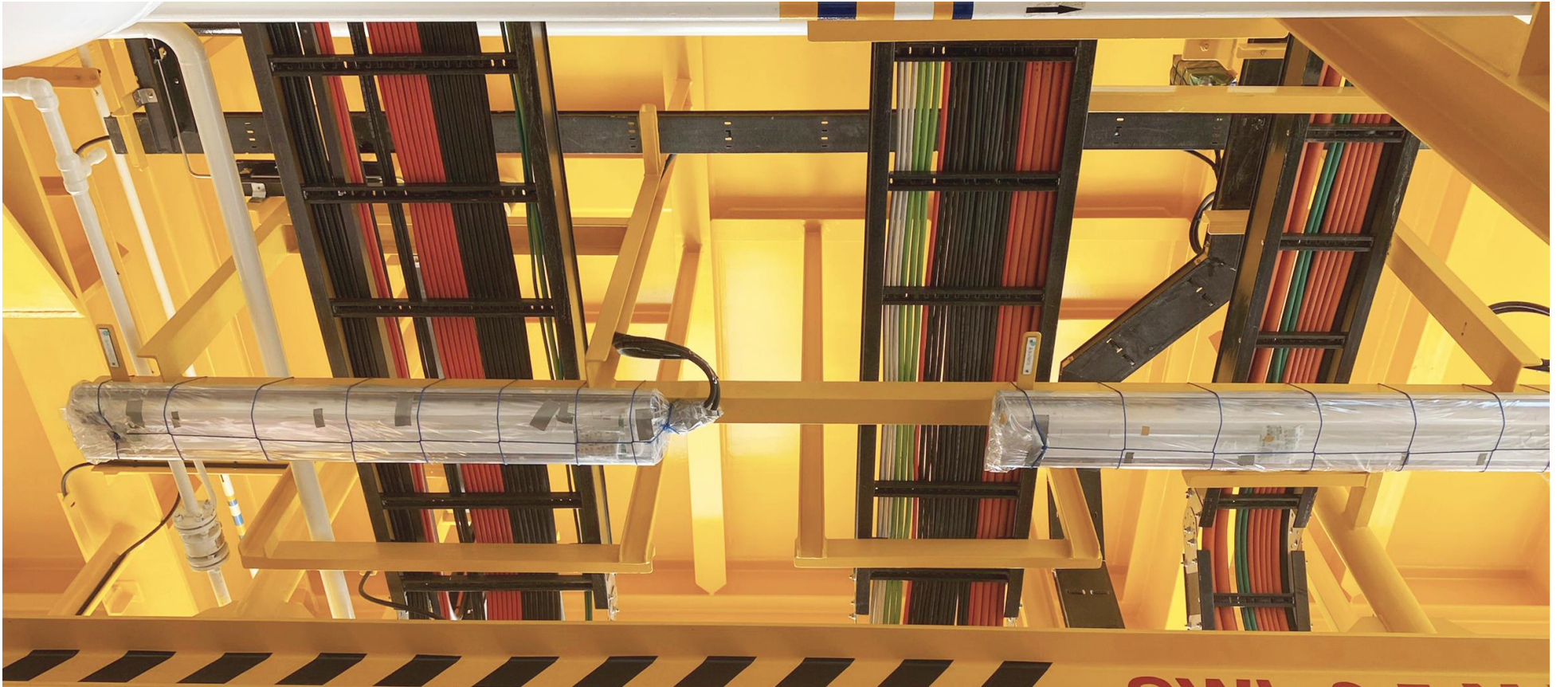




บริษัท ไตร-โปรเกรส อิเลคทรูเมนต์จำกัด
439/181-182 หมู่4 ถ.ท้ายบ้าน ต.ท้ายบ้าน
อ.เมือง จ.สมุทรปราการ 10280
Tel. 02-7033390 Fax.02-7033391

Tri - progress electrumment co.,Ltd.
439/181-182 Moo 4 Taiban Rd.
T. Taiban, A. Muang, Samutparkarn
Email: tri-progress@hotmail.com

CORPORATE DETAILS



TRI-PROGRESS
ELECTRUMENT CO.,LTD



Paid-up capital	2,500,000 Baht
Year established	1997
Value added tax (VAT)	Added to system at a rate of 7 %
Trade registration number	0115540001949
Business	Contractor for electrical system installation and instrument installation
Operation Bank	Siam commercial bank .,ltd Samutprakarn brach tel 02-3871996
Number of employees	150 persons
Clients	Industrial factories ,Offshore platform and commercial Building
Management	Mr. Somkiet Kongphaya - Manager Director

PROJECT

International work records

Typical project involvement

Since 1997-2019

Thai-nippon steel eng&con Corp.,ltd

Total project (Well head Platform)
Phase WP -9 : Wellhead platform from phase 3B

1997

Thai-nippon steel eng&con Corp.,ltd

UNOCAL Project (4 Legs and Tripod Wellhead Platforms)
Phase 21-21TL (well head platforms)

1997-1999

Thai-nippon steel eng&con Corp.,ltd

PPML – Yetagunfield Project for offshore service

1999-2010

CUEL co.,ltd

UNOCAL Project (Wellhead Platforms)
Phase 22 (well head platforms)

1998

CUEL co.,ltd

UNOCAL Project (Wellhead Platforms)
Phase 23 (well head platforms)

1998

CUEL co.,ltd

UNOCAL Project (Wellhead Platforms)
Phase 24 (well head platforms)

1999

1999



CUEL co.,ltd

UNOCAL Project (Wellhead Platforms)

Phase 25 (well head platforms)

2000



CUEL co.,ltd

UNOCAL Project (4 Legs and Tripod Wellhead Platforms)

Phase 26 (well head platforms)

2000



CUEL co.,ltd

Phase 27 (well head platforms)

2000



Thai-nippon steel eng&con Corp.,ltd

Pogo Hook-up off shore Project Instrument Hook-up TWA,

Pogo Hook-up off shore project Instrument Hook-up BWA,

BWB and BWC

2001



Thai-nippon steel eng&con Corp.,ltd

Carigali – Triton Operating Company SDN BHD

(CTOC Project) For Malaysia – Thai Joint Development Area

Area (MTJA) Technip Far East SDN, BHD, CKA, CKC (Well head Platforms 4 legs)

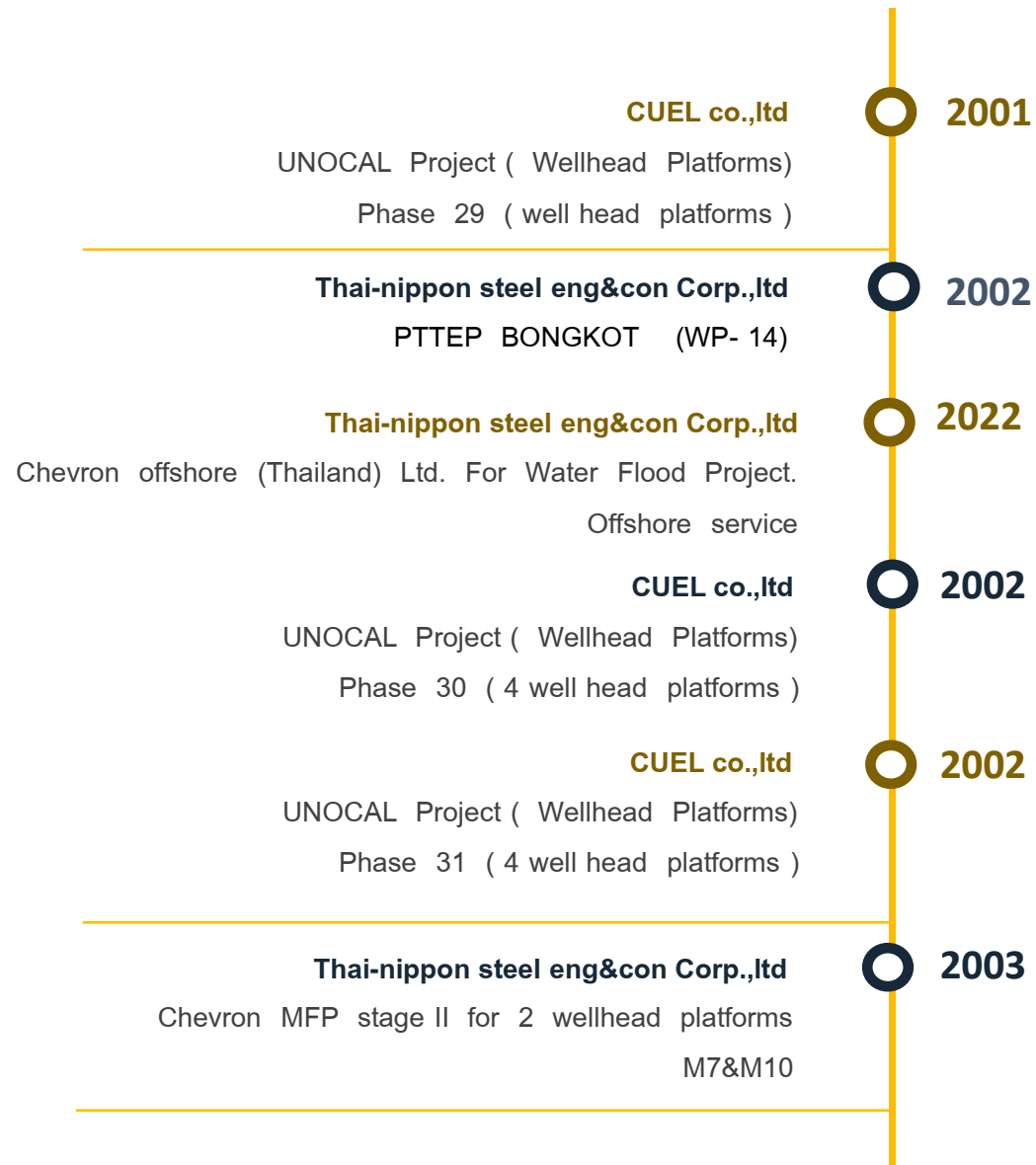
2001



CUEL co.,ltd

UNOCAL Project (Wellhead Platforms)

Phase 28 (well head platforms)



2003



Thai-nippon steel eng&con Corp.,ltd

Chevron MFP stage II for 3 wellhead platforms
M12&M13M14

2003



Thai-nippon steel eng&con Corp.,ltd

PTTEP BONGKOT (WP- 13)

2003



CUEL co.,ltd

UNOCAL Project (Wellhead Platforms)
Phase 32 (7 well head platforms)

2004



Thai-nippon steel eng&con Corp.,ltd

Electrical system for Thai nippon steel engineering & construction
co.,ltd at new Bangpakong yard.

2004



CUEL co.,ltd

Chevron MFP stage III for 4 wellhead platforms

2004



CUEL co.,ltd

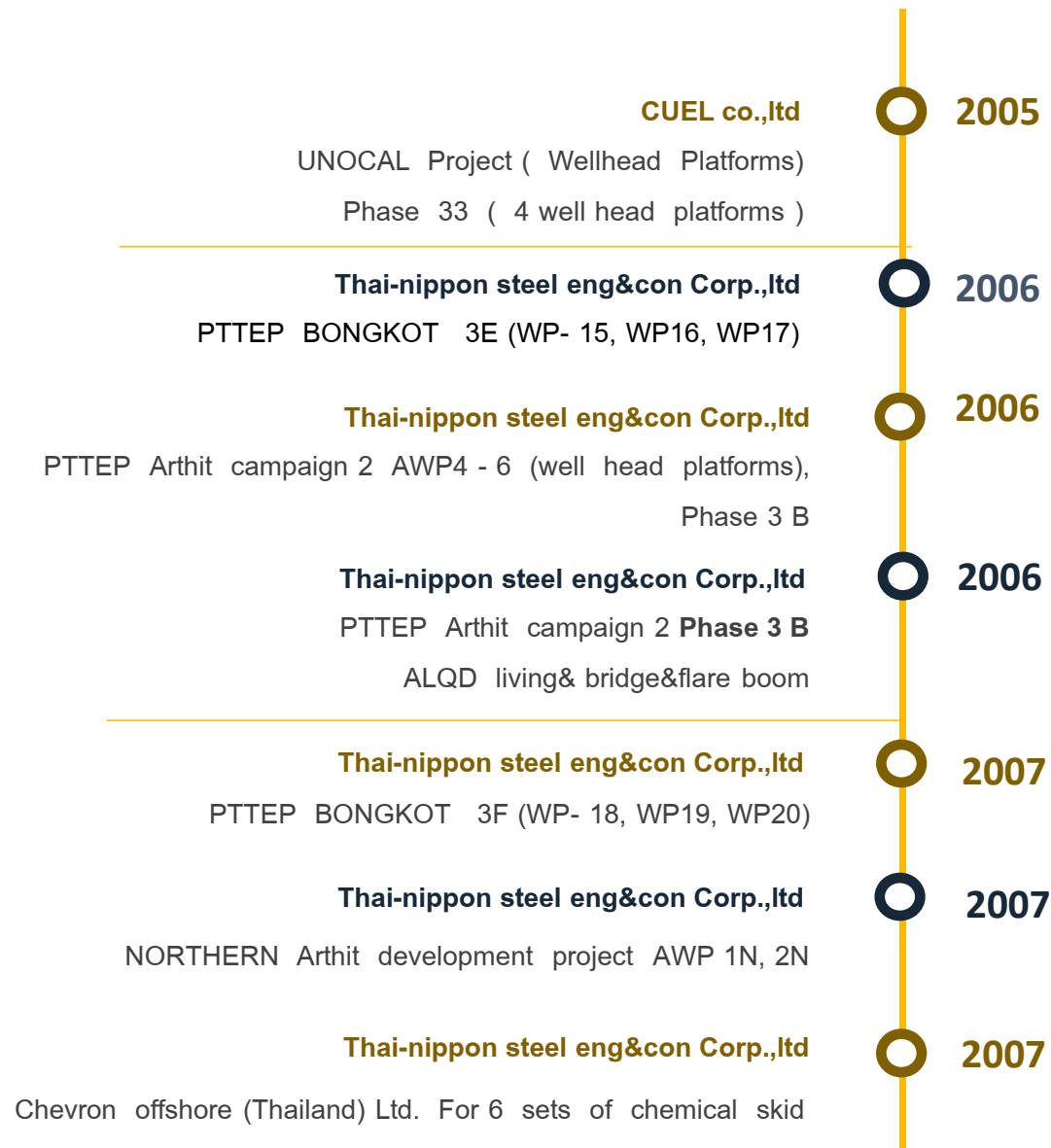
Process platform UNOCAL project PLOCPP

2005



Thai-nippon steel eng&con Corp.,ltd

PTTEP Arthit campaign 1 AWP1 - 3 (well head platforms),
Phase 3 B



2007



CUEL co.,ltd

Chevron MFP stage 4 for 4 wellhead platforms
M24-28

2007



CUEL co.,ltd

Hazira project. For well head platforms

2007



CUEL co.,ltd

Pearl oil (Thailand) ltd, Jasmine project. Phase I-WPD (well head platforms)

2008



Thai-nippon steel eng&con Corp.,ltd

PTTEP Arthit 1B AWP7-10 (well head platforms)

2008



CUEL co.,ltd

COTL Project (Wellhead Platforms)
Phase 34 (5 well head platforms)

2008



CUEL co.,ltd

COTL Project (Wellhead Platforms)
Phase 35 (4 well head platforms)



2009



CUEL co.,ltd

CTEP Project (Wellhead Platforms)

Phase 37 stage A (2 well head platforms)

2009



CUEL co.,ltd

PTTEP Arthit development project 1C **WP11-14**

2009



Thai-nippon steel eng&con Corp.,ltd

PTTEP offshore service and maintainance project for ceag product

2010



CUEL co.,ltd

CTEP Project (Wellhead Platforms)

Phase 37 stage B (7 well head platforms)

2010



CUEL co.,ltd

CPOC MUDAD Project

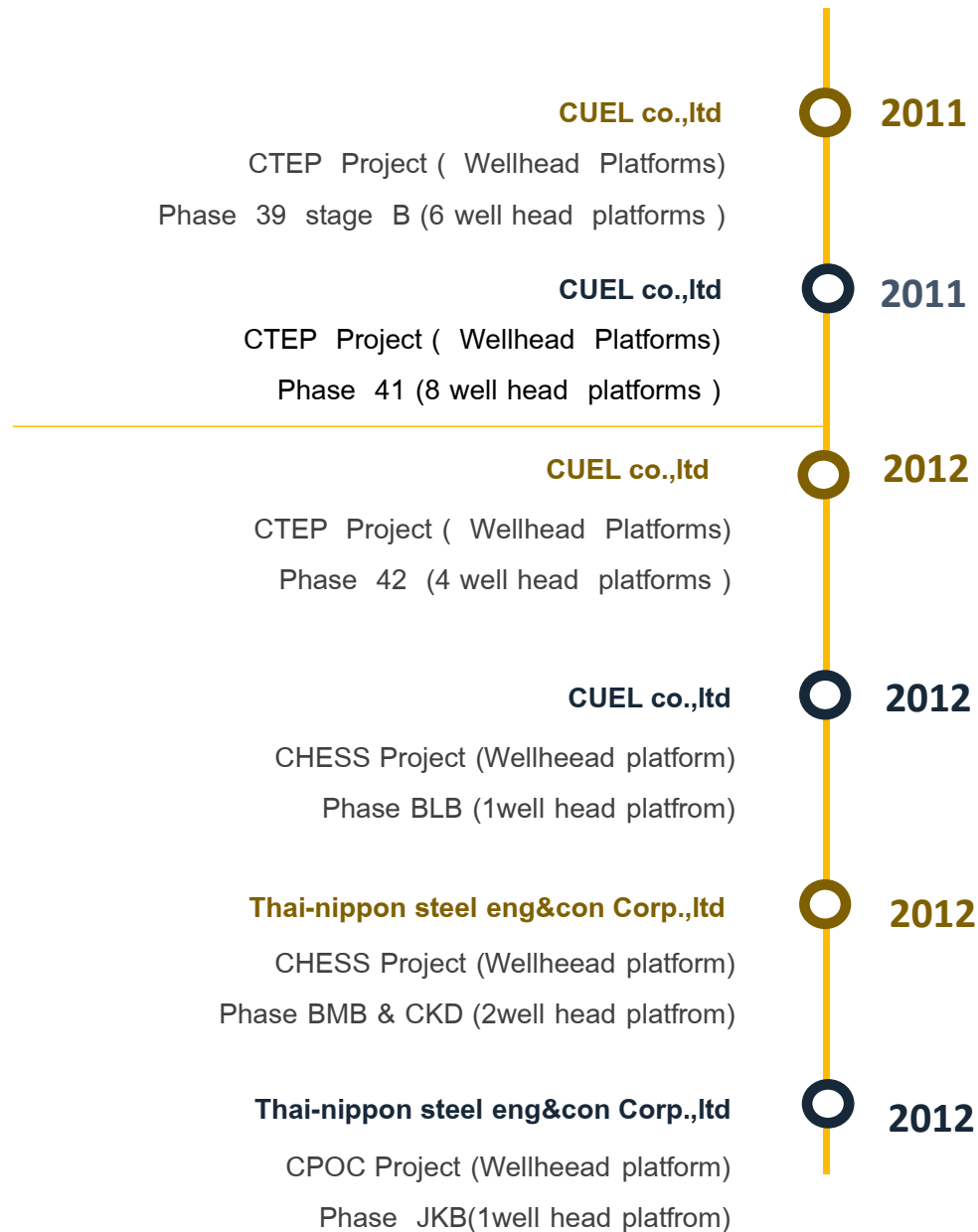
2010



CUEL co.,ltd

SURIYA Project (Wellhead Platforms)

Phase SYB (1 well head platforms)



2012



Thai-nippon steel eng&con Corp.,Ltd

CPOC Project (Wellhead platform)

Phase MDE(1well head platform)

2012



Thai-nippon steel eng&con Corp.,Ltd

BUALUANG Development Project (Wellhead platform)

Phase BRAVO(1well head platform)

2013



CUEL co.,Ltd

CTEP Project (Wellhead Platforms)

Phase 43 (9 well head platforms)

2013



Thai-nippon steel eng&con Corp.,Ltd

CHESS Project (Wellhead platform)

Phase BMD(1well head platform)

2013



Thai-nippon steel eng&con Corp.,Ltd

CHESS Project (Wellhead platform)

Phase BLC(1well head platform)

CUEL co.,ltd

CTEP Project (Wellhead Platforms)

Phase 44 (9 well head platforms)



2013

CUEL co.,ltd

CTEP Project (Wellhead Platforms)

Phase 45 (9 well head platforms)



2013

Thai-nippon steel eng&con Corp.,ltd

PTTEP Project (Wellhead platform)

Phase 2 C AWP 26-29 (4 wellhead platforms)



2013

Thai-nippon steel eng&con Corp.,ltd

PTTEP Project (Wellhead platform)

Phase 4 C WPS 11-13 (3 wellhead platforms)



2014

Thai-nippon steel eng&con Corp.,ltd

PTTEP Project (Wellhead platform)

Phase 3 M WP 32-35 (4 wellhead platforms)



2014

CUEL co.,ltd

CTEP Project (Wellhead Platforms)

Phase 46 (9 well head platforms)



2014

2014



CUEL co.,ltd

CTEP Project (Wellhead Platforms)
Phase 47 (9 well head platforms)

2014



Thai-nippon steel eng&con Corp.,ltd

Mubadala Petroleum Project (Wellhead platform & Process Platform)
Phase Nongyao WHP & WPP(1 wellhead platforms & 1 Process platform)

2015



CUEL co.,ltd

CTEP Project (Wellhead Platforms)
Phase 48 (5 well head platforms)

2015



CUEL co.,ltd

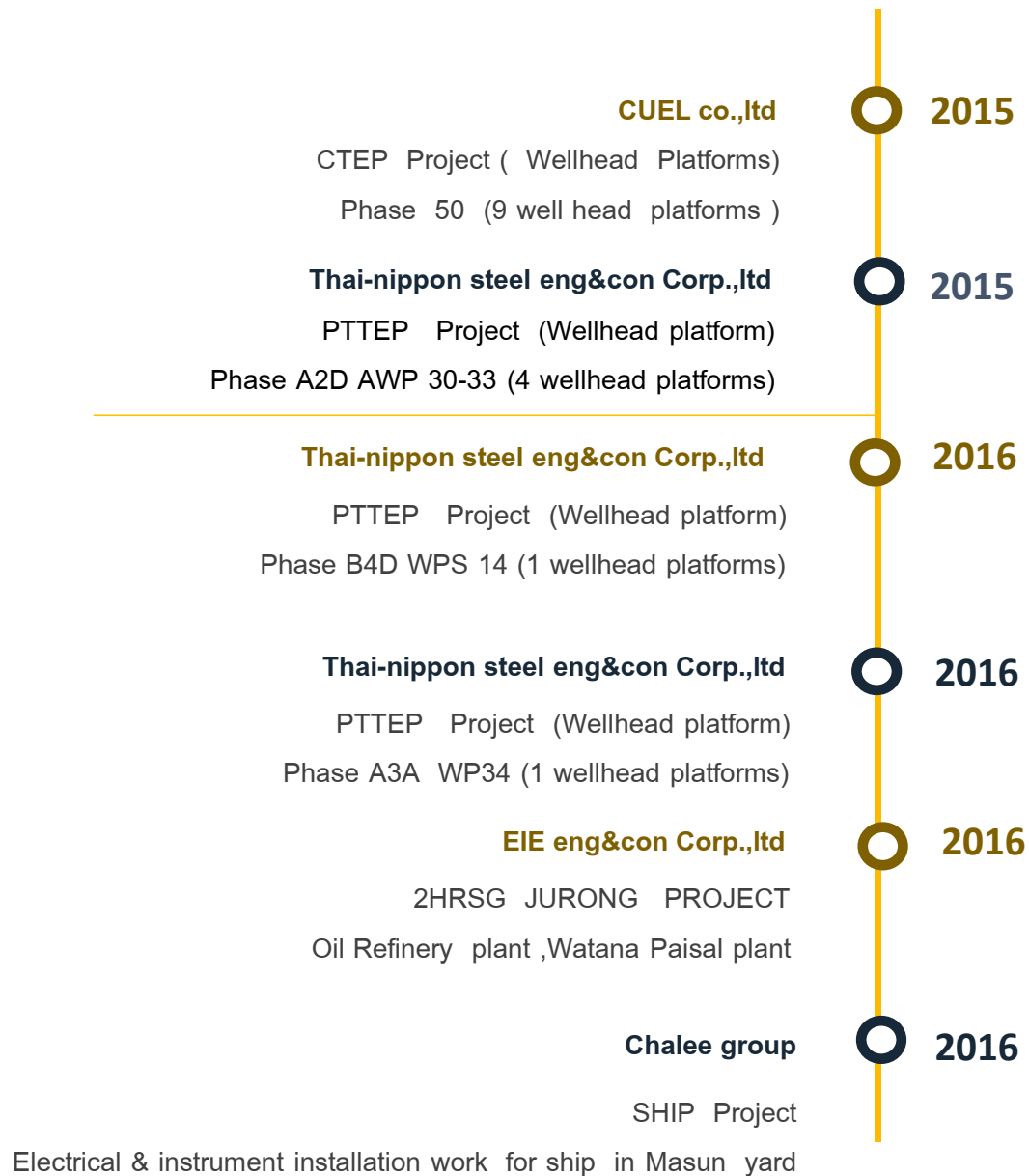
CTEP Project (Wellhead Platforms)
Phase 49 (9 well head platforms)

2015



Thai-nippon steel eng&con Corp.,ltd

PTTEP Project (Wellhead platform)
Phase 3 N WP 36-38 (3 wellhead platforms)



2016



Thai-nippon steel eng&con Corp.,ltd

OFFICE BUILDING FLLOR NO 20 PROJECT

electrical & telecommunication system installation for office building

2017



Thai-nippon steel eng&con Corp.,ltd

PTTEP Project (Wellhead platform)

Phase A3B AWP 35-36 (2 wellhead platforms)

2017



Thai-nippon steel eng&con Corp.,ltd

PTTEP Project (Wellhead platform)

Phase B4E WPS 15-16 (2 wellhead platforms)

2017



Thai-nippon steel eng&con Corp.,ltd

ELECTRICAL SYSTEM IN TNS BANGPAKONG YARD

Modify and maintenance electrical & telecommunication

2017 - 2018



Thai-nippon steel eng&con Corp.,ltd

BUNDLED 2 B3P (Wellhead platform)

PHASE BONGKOT 3P (WP39-45) (7 Wellhead platform)

Unithia ship yard and engineering Co.,Ltd

Utility vessels project
(2 vessels)

2017-2018

Thai-nippon steel eng&con Corp.,Ltd

PTTEP Project (Wellhead platform)
Phase B3P WPS 39-45 (7 wellhead platforms)

2018

BJC Heavy Industries Public Company Limited

Bulaluang Charili Wellhead Structrue Fabrication And Transportation Project

2019

Thai-nippon steel eng&con Corp.,Ltd

BUNDLED 2 Phase Arthit 3C (AWP37&38) Fabrication work

2019 Jan
2020 Feb

BJC Heavy Industries Public Company Limited

Sweeny & Convent Project

2020 Feb - July

May 2020
Aug 2021



Thai-nippon steel eng&con Corp.,ltd

EPCI FOR G1/61 PHASE1A - Fabrication work

May 2020
Aug 2021



Thai-nippon steel eng&con Corp.,ltd

EPCI FOR AWP39 DEVEL OPMENT Project - Fabrication work



Fabrication
and installation
support

FABRICATION AND INSTALLATION SUPPORT



Electrical work- Navigation Aids System





Instrument work

**PRESSURE GAUGE
INSTALLATION**



Instrument work

**PRESSURE TRANSMITTER
INSTALLATION**



Instrument work

**FLOW ROTA METER
INSTALLATION**



ELECTRICAL WORK

Lighting installation



Electrical work

Thermo electric Generator (TEG) system

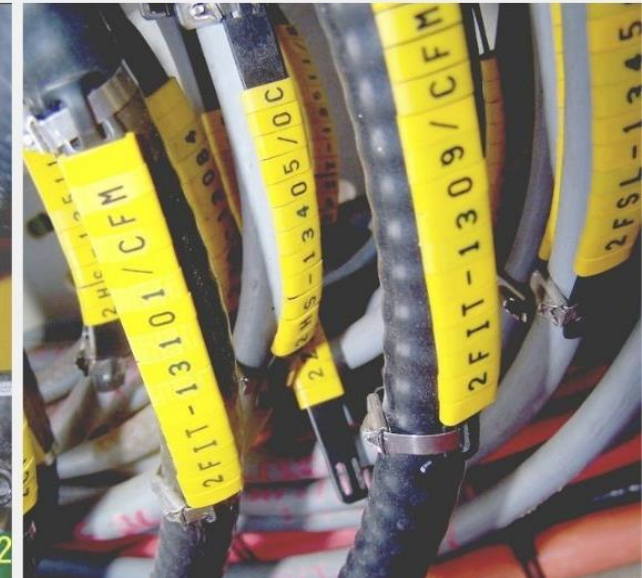
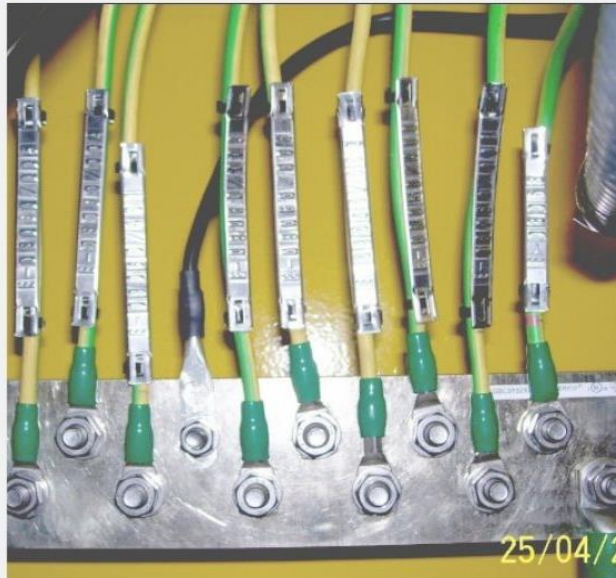
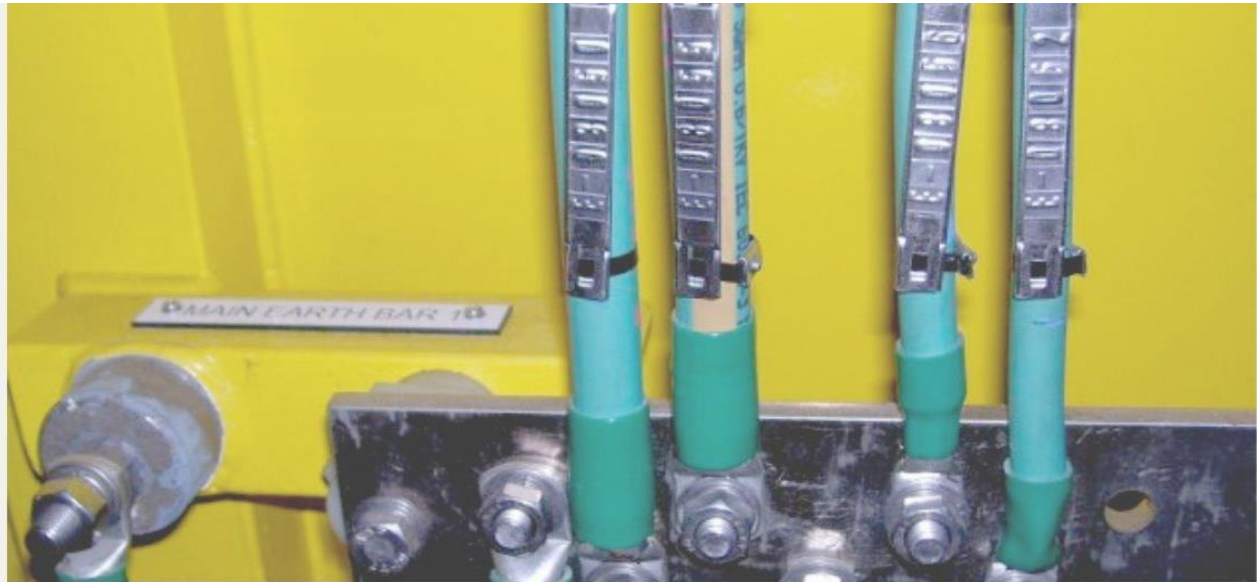


EQUIPMENT INSTALLATION



Electrical work

Cable installation





GLANDING AND WIRING CABLE



GLANDING AND WIRING CABLE

Electrical work

Electrical equipment installation



TRI-PROGRESS ELECRTUMENT



Electrical work
Electrical equipment installation

TRI-PROGRESS ELECRTUMENT





ELECTRICAL WORK
Electrical equipment installation

Instrument work

Tubing installation







**Instrument work
Tubing installation**



Instrument work Tubing installation



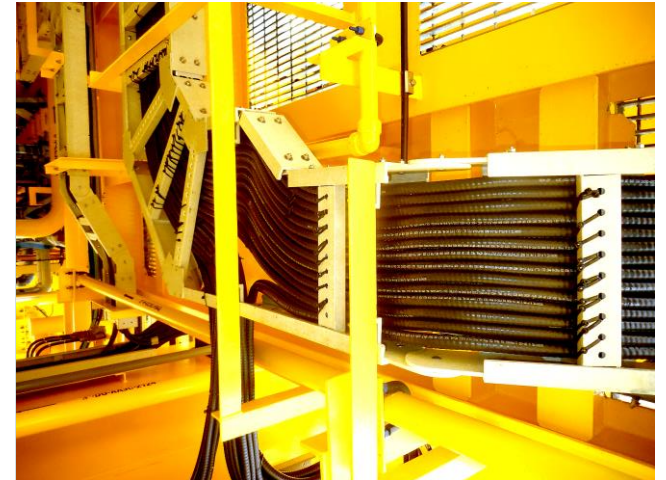
Instrument work – Tube Tray installation

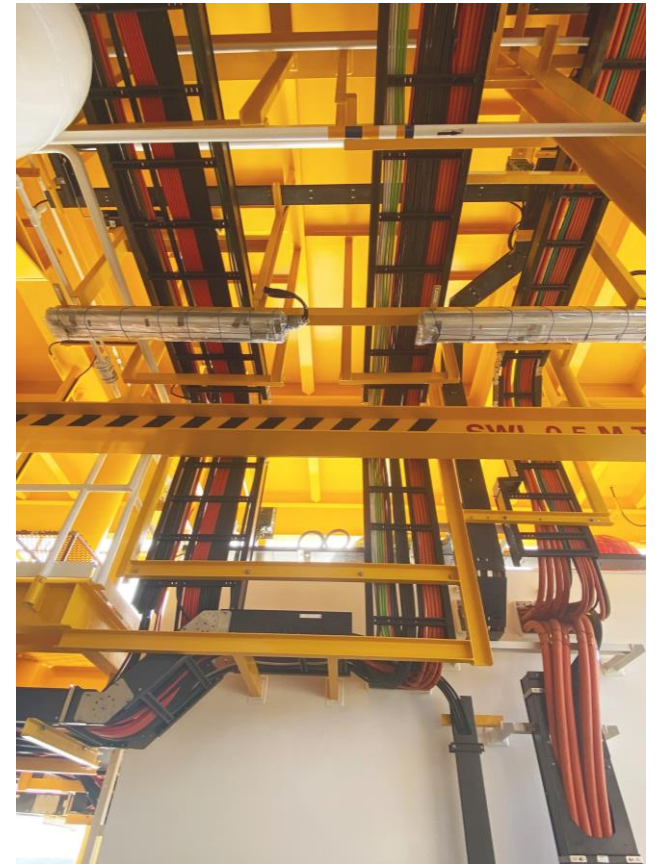




CABLE TRAY&LADDER

TRI-PROGRESS ELECTRUMENT

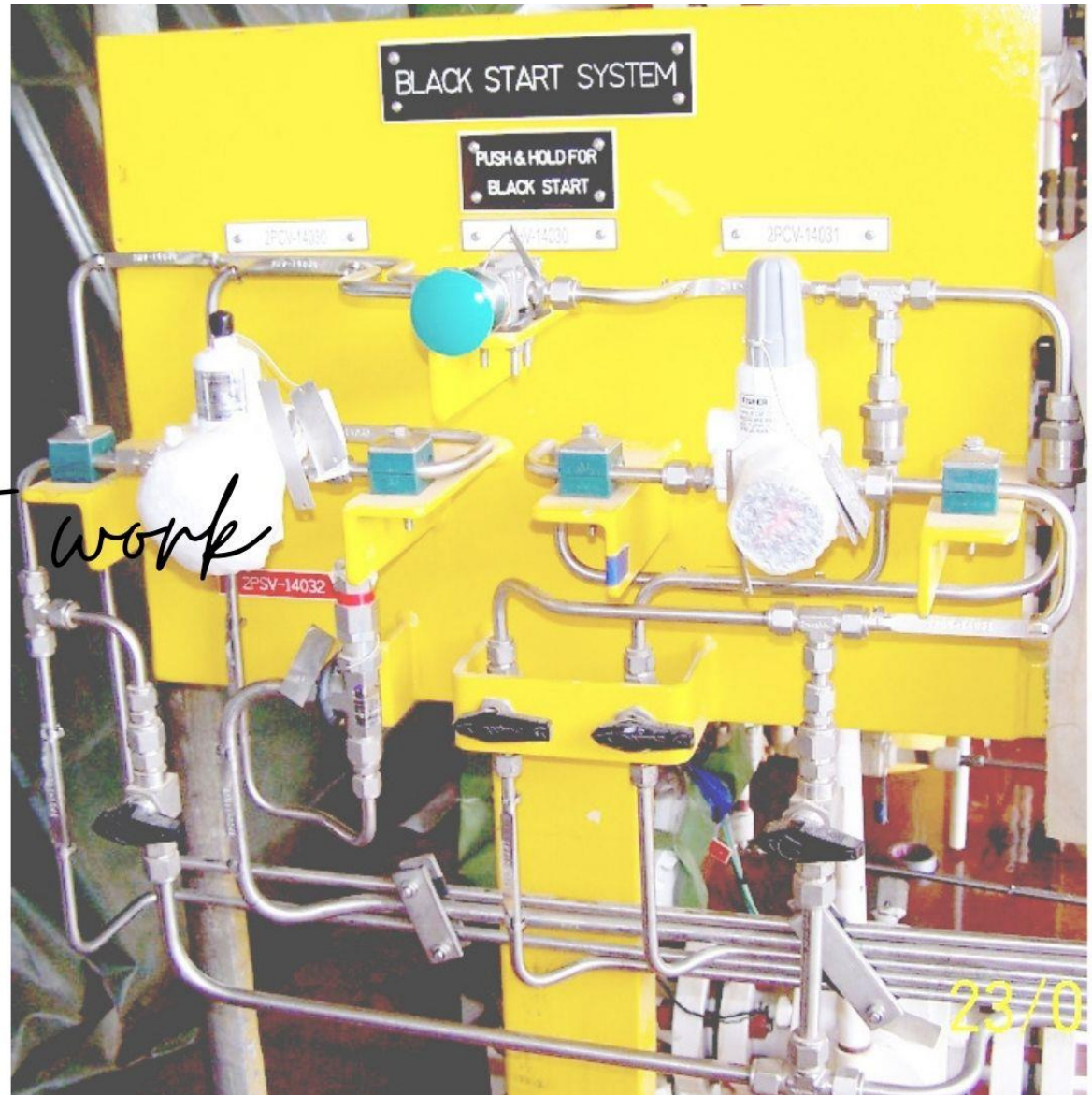




TRAY
LADDER

Instrument work

BLACK START SYSTEM INSTALLATION

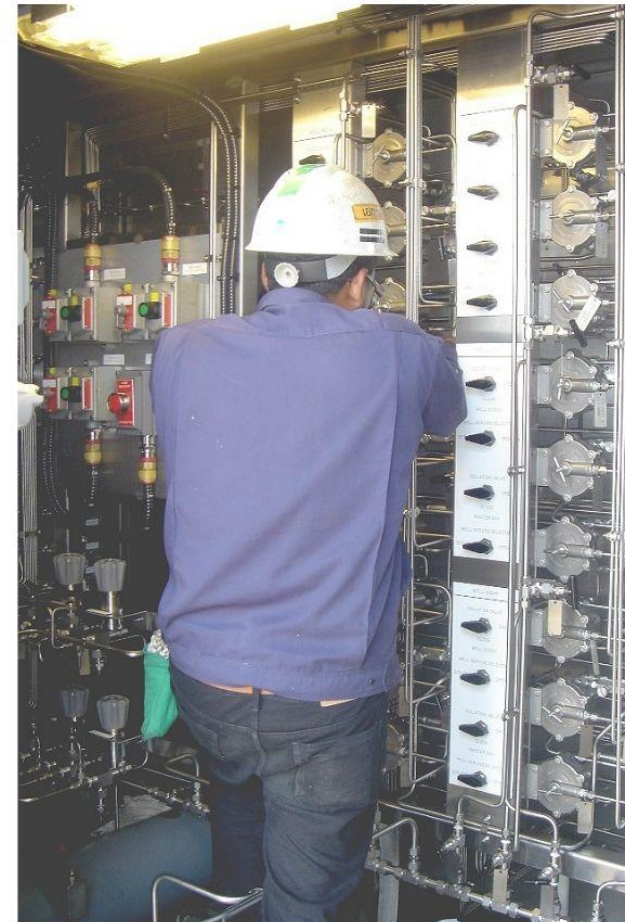




Instrument work

TRI-PROGRESS ELECTRUMENT

Wellhead Control
Panel installation





PRE- COMMISSIONING

TRI-PROGRESS ELECTRUMENT



PRESSURE TEST AND FLUSHING TEST

TRI-PROGRESS ELECTRUMENT

FACEBOOK FANPAGE

Scan QR code to follow facebook fan page

